



# Greerton Village School – Te Kura o Maarawaewae Whānau Communication Newsletter 21st February 2025

Kia ora e te whānau,

## MESSAGE FROM MS KIMBERLEY

I hope this newsletter finds you well.

Welcome back to school and to 2025. We have had a very settled and busy three weeks back to kura, children have definitely “shot up” in height over the holidays and are happy to be back at school with their friends and kaiako engaged in learning. We have loved seeing all of our old friends back while we have welcomed many new tamariki and whānau to our school.

This year lots of new changes come into play across the education sector. This includes refreshed curriculums. Changes are ongoing and not everything is confirmed yet regarding programming and assessment, however we have rolled out changes already at our school in both Numeracy and Literacy.

A structured numeracy approach across our school with Math’s No Problem! where children are taught in their Year Levels and from a sequenced and sequential approach. A newsletter came out about this earlier this week.

Kaiako in our middle and Senior School are also currently involved in the training and rollout of Structured Literacy through Clarity Education. Structured literacy has been taught in our Junior School for a number of years, so it is exciting that now it will be continued and implemented across our entire school.

Our staff have embraced these changes and are excited to see the value the changes will bring for children’s learning.

Attendance continues to be a major focus at our school and schools across the country. The national attendance goal is set at 90%. We know how much time off school, and lateness to school, effects and interrupts not only children’s learning but also children’s social and emotional wellbeing. Please work with us to get your children to school on time and everyday.

There is a lot of information in this newsletter – please ensure you “Save the dates” there is a lot on in the coming weeks – It takes a Village!

Thank you for your ongoing support  
Kimberley

Our tamariki are looking fabulous in our new uniform polos and whare shirts and hats. These are available from the uniform shop when your child outgrows their old uniform . If you are unsure of what Whare group your child is in, please check in the office





151 Greerton Road Greerton Tauranga 3112

PO Box 9141 Greerton Tauranga 3142

Phone (07) 541 2350

## Team Updates

Te Rau Aroha Syndicate have settled into school wonderfully! The students are getting used to their new routines and are busy making new friends. We've had lots of new enrollments, and it's fantastic to see the children looking smart in their new uniforms. Thank you to all the whānau who have purchased stationery packs. This is extremely helpful as our class programmes have started.

As the days are quite hot, please remember to purchase or bring a hat to school to keep your child sun-safe. Our junior team has dived straight into our structured literacy programmes, and soon, children will start bringing books home to help practise the learning from class. We're looking forward to a fantastic year ahead full of growth and exciting experiences and we look forward to seeing you all at our whānau hui next week.

### Te Pihinga

Our syndicate is year 3 and 4 tamariki. We welcome Whaea Molly to our kura and syndicate, as a new kaiako in room 9. Whaea Mea is our kaiako in room 8 and Matua Tim is our kaiako in room 10. Whaea Helen is our team leader. We are looking forward to meeting whānau and sharing our programmes, at our Whole school Whānau Hui on Thursday 27th February at 4 - 5.30pm. Nau mai haere mai.

Te Māhuri have had a wonderfully busy start to the term in our newly refurbished classrooms. We are tucking into our learning with the introduction of Structured Literacy in the senior school as well as Math No Problem starting in Week 4. We have many exciting things planned this year, including Camp in Term 4. There will be a notice with information about camp coming in the next couple of weeks.

Nei ra te mihi ki a koutou, e te whānau mō tō koutou tautoko o te kaupapa nei. This is a big thank you to all of our whānau who have supported our akomanga - Whakatō te Kākano, and continue to support us and our tamariki. We have started the term off strong, by settling in to our routines, learning new waiata, mōteatea and kupu, also building closer relationships with our kaiako and peers. Our pūrakau focus for this Wāhanga is Te Pura, and modelling ngā uara (the values) shown in this pūrakau, such as manaakitanga, aroha and kōtahitanga. This term, our Kapa Haka practices are scheduled for Monday afternoons at 1:45pm. Nau mai haere mai e te whānau, if you are interested in coming along to learn the mahi alongside your tamaiti, our doors are always open.

Ngā mihi maioha,

Nā Ngā Kaiako o Whakatō te Kākano



151 Greerton Road Greerton Tauranga 3112  
PO Box 9141 Greerton Tauranga 3142  
Phone (07) 541 2350

TERM FOUR TERM ONE = SUNHATS AT SCHOOL. IT IS AN EXPECTATION AND PART OF OUR SCHOOL UNIFORM, THAT ALL STUDENTS WEAR A SUN HAT WHEN OUTSIDE DURING THESE TERMS. EVEN ON CLOUDY DAYS THE UV CAN BE HIGH AND SUN CAN CAUSE DAMAGE. PLEASE ENSURE YOUR CHILDREN HAVE A SUN HAT TO WEAR EVERY DAY AT SCHOOL.



## Important Upcoming Dates:

- 20th February - Ripper Rugby Starts Waipuna Park
- 24th February - BOT Meeting
- 27th February - Whānau Afternoon Community hui - 4:00pm-5:30pm
- TEACHER ONLY DAY - Wednesday 12th March - SCHOOL CLOSED FOR INSTRUCTION - MINISTRY OF EDUCATION MATHS CURRICULUM
- 28th March - Celebrating Cultures Day ( More info to come closer to day)
- 31st March - BOT Meeting
- 11th April - Last Day of Term 1
- 28th April - Day one of Term 2

Introducing our Kura and Whare Leaders for 2025 we are so thrilled to have you in leadership roles at our kura. Amazing tamariki, with huge potential .

- Bethany
- Hannah
- Waireti
- Kyla-Snow
- Raphy
- Teia
- Erema
- Te Rata
- Sonny
- Ngaone
- George
- Kelly-Anne
- Kereru





**Greerton Village School**

Te Kura o Maarawaewae

We are brave. We have mana. We show aroha. We can achieve.

## **School Reminders**

### **School Hours:**

- School starts at 8:50am and finishes at 2:45pm
- Breakfast Club is open from 8:10am and kaiako are in classrooms from 8:20am

### **Leaving the school grounds after school:**

- All students need to be in walking group or with a whānau member when leaving the school grounds.

### **Uniform:**

- Correct uniform needs to be worn to school daily.
- Our school Polo Shirt and Fleece are available at NZ Uniforms in town.
- Plain black Bottoms
- School Whare Shirts can be worn to school on Friday's purchased from NZ Uniforms
- Sunhats can be purchased at the Uniform shop and are to be worn in Terms 1 and 4

### **Communication:**

- Newsletters, HERO - Email, Phone and Facebook. These are all essential for forms of communication, please ensure you join school and classroom Facebook Pages and ensure that your email and cellphone contact details are correct at the school office.

### **Free Lunches and Fruit:**

- Our kura is provided with free lunches and fruit . Our lunch supplier is Bay Catering and lunches are delivered fresh daily.
- If you child has allergies or special food requirements please notify the School Office.

### **Absence:**

- Please inform the school office if your child is going to be away from school, by phoning the office (07) 5412350 or texting 0223757684
- If your child is late to school they need to enter the school and go to the main office and sign in and collect a slip slip for their teacher
- If you are collecting your child from school early or taking them for an appointment - you will need to sign them out of the office first before collecting them from the classroom. This follows our Health and Safety procedure.

### Swimming:

- Sadly this year we will not be holding a whole kura swimming sports - this event costs the school approx \$2,500, and without sponsorship we do not have the funds to pay for this.

This year senior students who have opted in to time trials will be given the opportunity to swim for a place at the West Cluster Swimming Sports.

### Education Review Office:

- On the 11th March the Education Review office will be visiting our kura. We have not had ERO at our school since 2019 so we are excited to welcome them to see all the incredible things that are happening in our school .

### Sport Registration:

- From Term 2 all sports registrations will be done online links will be sent out through HERO and Facebook and also on our School Website Page. Please ensure your email address is correct and that you are set up on our HERO app. If at any stage you require help to register your child, please come to the school office for assistance.

### Junk Shed:

We are always on the lookout for things to go in the junk shed, if you have any "bits and pieces" around your home that you would like to donate to our kura that kids can play and create with please bring them in. Items like, tyres, wood, lino, pots and pans, piping etc.... are all welcome!



# WHĀNAU HUI AFTERNOON

**Thursday 27th February 2025**

**4pm - 5:30pm**

Nau mai haere mai!

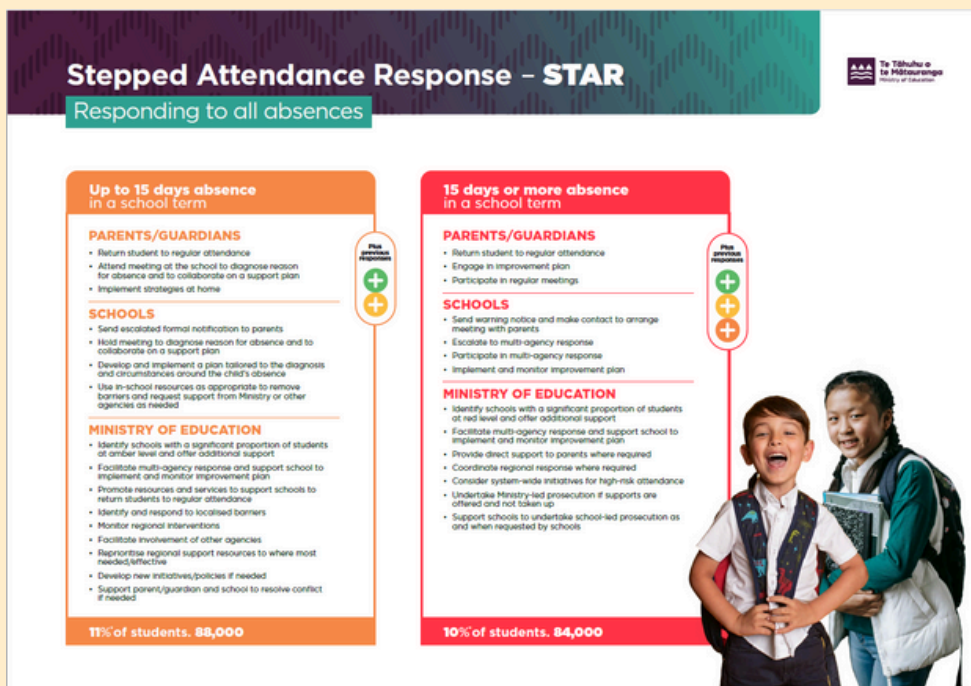
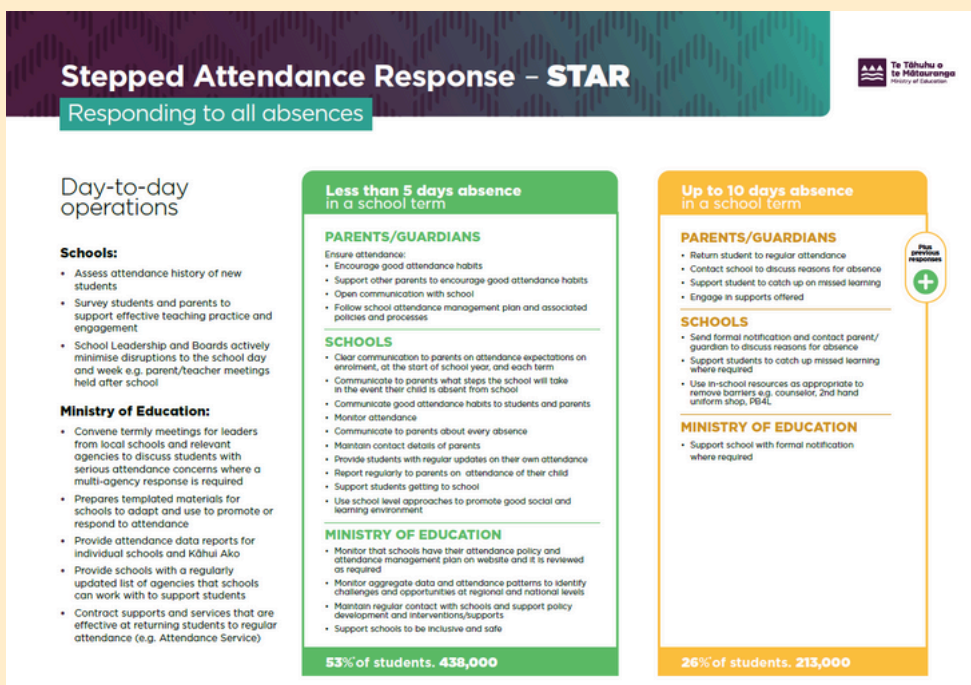
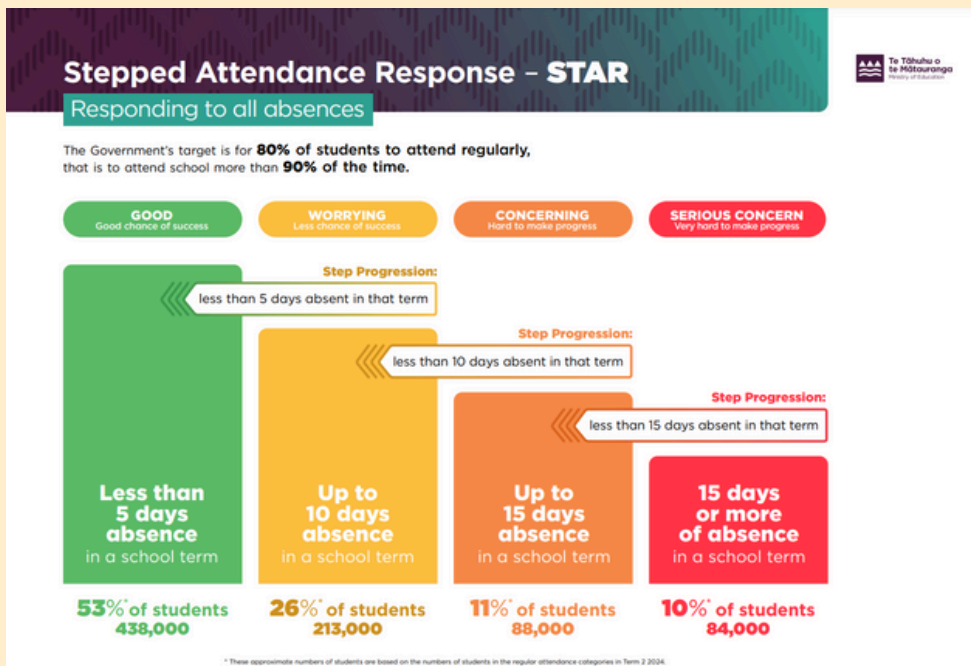
You are invited to attend our Whānau Hui afternoon to meet all of our kaiako/teachers and staff, to learn more about our programmes and opportunities on offer. Our teachers are looking forward to seeing you all, with games planned for tamariki of all ages.

Free sausages for all whānau who attend our afternoon. Also we will be selling drinks and ice-creams for \$2 each. Second-hand uniforms available for a gold coin donation. Come along and join in on the fun!

Ngā Kaiako o Te Kura o Maarawaewae



Attendance continues to be an issue at our school and schools across our country. Attendance = Achievement and children need to be at school daily to learn and reach their potential. STARS is an attendance program that is being rolled out across the country.





# Greerton Village School

## Te Kura o Maarawaewae

We are brave. We have mana. We show aroha. We can achieve.

Thank you to our sponsors who sponsor this termly newsletter

simply  
law SOLICITORS

- ✔ Family Law
- ✔ Property Law
- ✔ Commercial Law

We're here to help, call us today  
Ph 07 577 1787

108 Chadwick Road, Greerton.  
[www.simplylaw.co.nz](http://www.simplylaw.co.nz)

Serving people, their pets  
& animals since 1970



- |               |                   |                    |           |
|---------------|-------------------|--------------------|-----------|
| Consultations | Ultrasonography   | On site laboratory | Dentistry |
| Home Visits   | Exotic pets       | Orthopaedics       | Medicine  |
| Surgery       | Premium pet foods | Digital Radiology  | PennHIP   |

Discount offered to Super Gold Card holders

Barkes Corner Vet Hospital  
Ph: 543 0026 ALL HOURS  
Mon & Thurs: 8am-8pm  
Tue, Wed & Fri: 8am to 5.30pm  
Saturday: 9am to 4pm

Brookfield Vet Clinic  
Ph: 576 1818 ALL HOURS  
Monday to Friday 8am to 8.30pm  
Saturday 9am to 12pm  
[www.barkesvet.co.nz](http://www.barkesvet.co.nz)

We are a family friendly Church, where everyone is welcome. We run a Sunday school program as part of the service each week. Throughout the week we run different events, like Home Group (Bible Study) and friendship club. We look forward to meeting you.

Service times: Sunday's 10:30am -11:30am

Crn Devon Rd and Pooles Rd Greerton  
Ph 541 2182  
Email: [office@stjamestauranga.co.nz](mailto:office@stjamestauranga.co.nz)

Minister contact details  
Rev Philipp Potgieter  
Ph 020 4010 7364  
Email: [hppotgieter@gmail.com](mailto:hppotgieter@gmail.com)



St James  
Union Church



## Peter the Painter

Painting Contractor to Greerton Village School

Ph 07 543 0030  
Mob 027 245 7637

P R Fergusson



## PRECISION DANCE

- Preschool Dance
- Contemporary
- Classical Ballet
- Acrodance
- Jazz
- Tap Dance

E [studio@precisiondance.co.nz](mailto:studio@precisiondance.co.nz) W [precisiondance.co.nz](http://precisiondance.co.nz)

Contact Aimee 0225060068  
14a Wilrose Place, Gate Pa

Property Management Specialists

0800 736 854



RENTLINK LTD  
LINKING PEOPLE TO PROPERTY

FREE  
RENTAL APPRAISAL

Follow us on social media



TAURANGA | MOUNT MAUNGANUI | PAPAMOA  
0800 736 854 | [info@rentlink.co.nz](mailto:info@rentlink.co.nz) | [www.rentlink.co.nz](http://www.rentlink.co.nz)